



www.jetionsolar.com



Open a new era of ultra-high efficiency

**Jetion Solar (China) Co., Ltd.**

📍 No. 1011, Zhencheng Road, Shengang, Jiangyin,  
Jiangsu Province 214443, P. R. China

**CNBM (Jiangyin) Photoelectric Material  
Technology Co., Ltd.**

📍 New material Industry Park, Huangtu, Jiangyin,  
Jiangsu Province 214443, P. R. China

☎ 0510-86687300  
✉ marketing@jetion.com.cn

Jeniüs N-HJT technology brochure 2025\_12

# JETION SOLAR

## GLOBAL LEADER IN SOLAR PRODUCT MANUFACTURING AND ENGINEERING SERVICES EXPERT

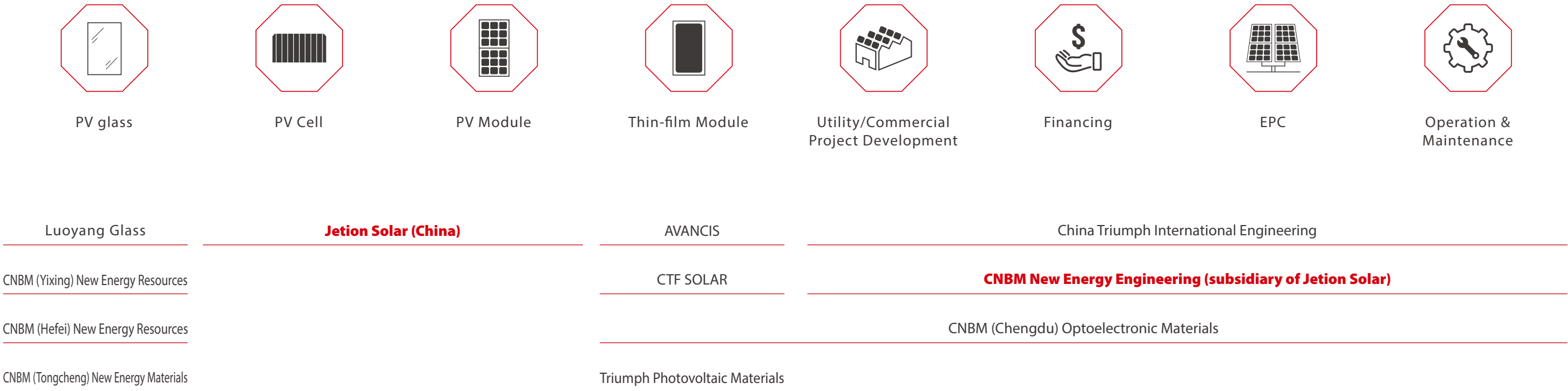
Founded in 2004, Jetion Solar is the flagship enterprise of CNBM Group (China National Building Materials Group Corporation) in the new energy sector. As a global leader in solar technology, Jetion Solar is at the forefront of new-quality productive forces, specializing in the R&D and manufacturing of high-efficiency solar cells and modules. Building on this foundation, Jetion Solar actively expands the global portfolio in solar power project development, engineering, construction, and operation, aiming to become a world-class provider of integrated PV products and engineering solutions.

So far more than 20 GW of Jetion Solar's products have been deployed across 83 countries and regions. And as backed by CNBM, Jetion Solar also provides global EPC services and project financing. Currently, Jetion Solar has an annual production capacity of 4.4 GW of cells, 2.5 GW of modules with 5 manufacturing plants worldwide. Jetion Solar serves worldwide customers with high-quality products and professional services.



### CNBM's Solar Value Chain

From raw materials to project development, CNBM provides the whole PV value chain integration.





# HJT TECHNOLOGY PLATFORM

## MAN OF ACTION IN PROMOTING APPLICATIONS

As a world-renowned solar photovoltaic enterprise, Jietion Solar attaches great importance to technology innovations, always adhering to the R&D philosophy of "Commercialize One Generation, Develop One Generation, and Reserve One Generation", and continuously promoting technology iterations and upgrades to provide customers with higher efficiency, higher quality photovoltaic products and better one-stop solutions.

Jietion Solar's stunning R&D team has been deeply involved in solar cell technology for many years, and with the accumulation of technology in silicon-based cells and the spirit of open innovation, significant breakthroughs have been made in exploring passivation technology, carrier selective conduction, metal-semiconductor contact, etc., and the HJT technology was born.

Jietion Solar R&D center is one of the most advanced photovoltaic laboratories in the industry. The laboratory has acquired China CNAS laboratory accreditation, TÜV SÜD CTF laboratory qualification and Wuxi key laboratory.

*Jietion Solar has obtained more than **283** technology patents.*

### EXCELLENT R&D TEAM

**3** PhDs, National 863/973 Project & First HJT industrialization Projects in China



**50+** Leading Talents



**20+** years of experience in the development of photovoltaic technology

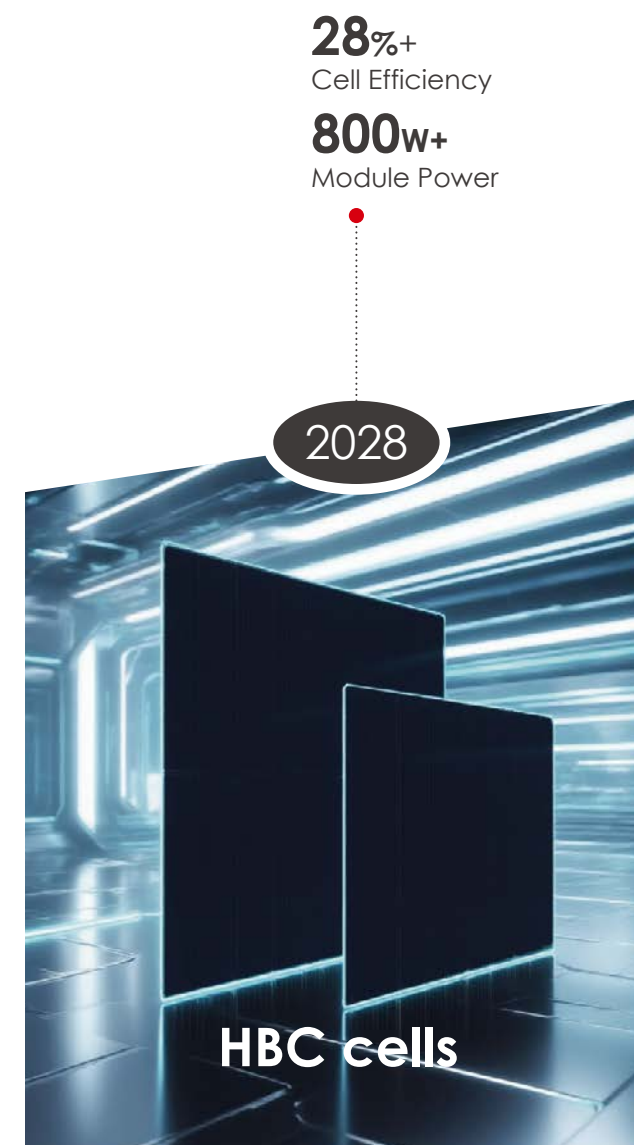
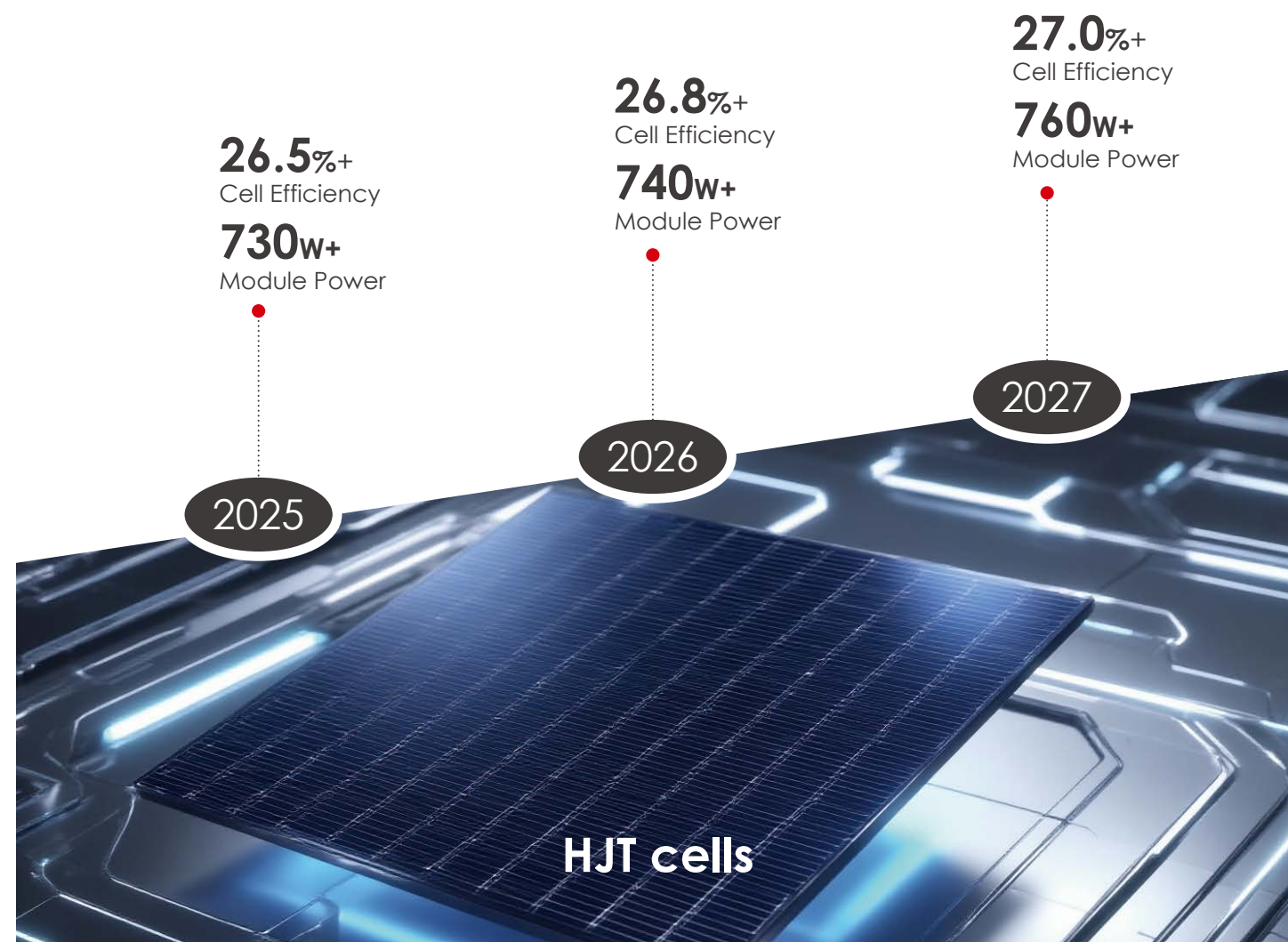




# TECHNOLOGY LEADS THE FUTURE

## HJT HIGH-EFFICIENCY PHOTOVOLTAIC INDUSTRY LEADER

Jetion Solar R&D team has always been committed to the development and commercialization of new cell technologies. Based on silicon-based cells, the company started with Al-BSF polycrystalline silicon, transitioned to PERC cells and finally realized the industrialization of HJT on the ground. At the same time, the R&D team has also laid out advanced technologies such as microcrystalline, BC structure and shingled, and is always ready for technology upgrade. The clear technical route allows us to face each round of technological impact with ease.

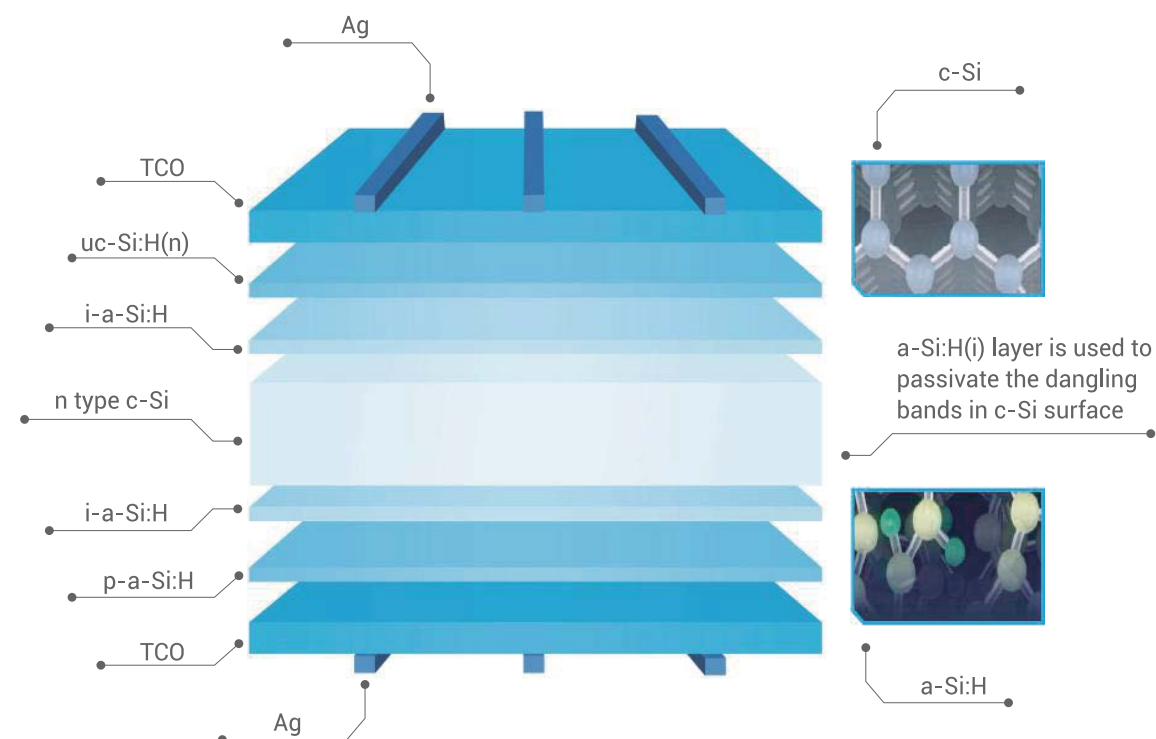
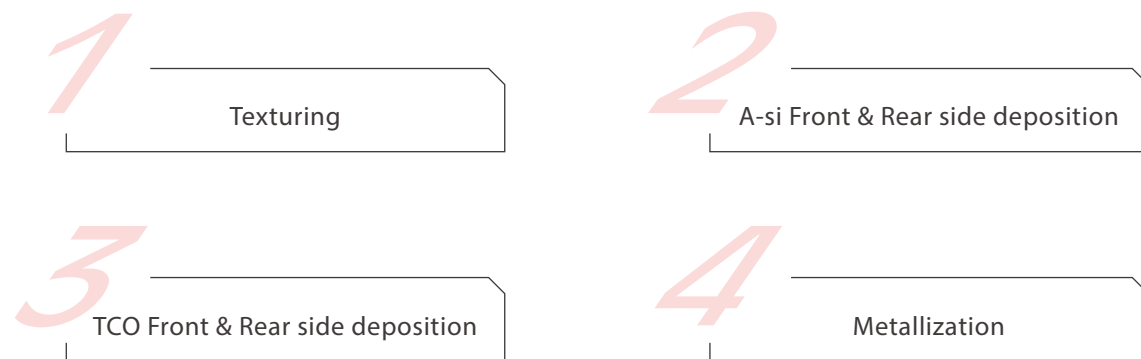


A leading domestic PV innovation platform for higher efficiency and lower cost.

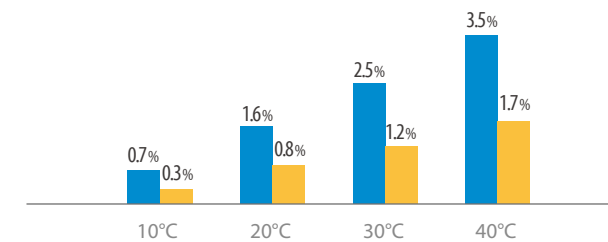
# EXTREME INCREASE IN POWER GENERATION

HJT cells offer breakthrough improvements in efficiency and performance compared to traditional PERC technology. In addition, compared to other solar cell technologies, Jetion solar's HJT cell manufacturing requires only four low-temperature process steps, resulting in higher production efficiency and lower losses.

## FOUR-STEP PROCESS



Power generation of HJT over PERC  
Power generation of HJT over TOPCon

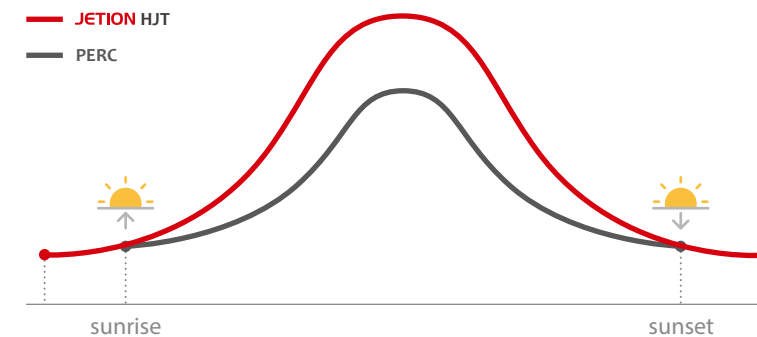
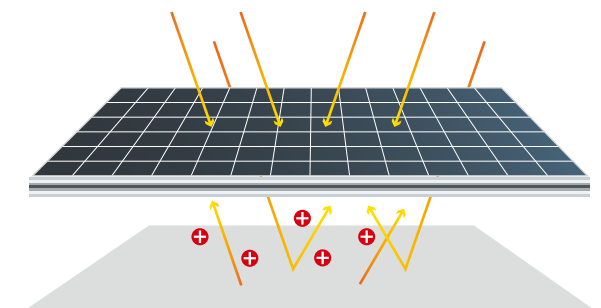


## Extreme temperature coefficient

HJT cells have extreme temperature coefficients with improved power generation by **2-4%** compared to PERC and **1-2%** compared to TOPCon at high temperatures in summer.

## Bifaciality 90%

HJT comes with the fundamental advantage of the highest bifaciality, about **2-4%** higher than bifacial PERC.



## Excellent low light performance

Extend power generation in low light conditions such as early morning and late afternoon, average daily power generation is approximately **0.5-1%** higher than bifacial PERC.



# HJT CELLS

HJT cells combine the advantages of crystalline silicon and amorphous silicon thin-film technology, marking them as one of the solar industry's premier cell technologies today. Jetion Solar is fully committed to the HJT technology pathway, and has successfully elevated mass production efficiency through the employment of numerous core technologies, including wafer absorption, high cleanliness cleaning, intrinsic amorphous silicon passivation, doped layer microcrystalline silicon, MBB and half cut.



-0.24%/℃



NO LID&PID

wafer	N-type wafer
Dimension	210×105±0.35mm
thickness	110±20μm
busbars	0BB/20BB

05 High efficiency cells

5.842<sub>W</sub>

Maximum power for mass production

26.5%

Maximum efficiency for mass production

-0.22 %/K

Temperature Coefficient of Voc (βVoc)

+0.04 %/K

Temperature Coefficient of Isc (αIsc)

## Higher generation gain

HJT cells can increase module bifaciality to over 90%, ensuring higher power output.

## Better power generation

The ultra-low temperature coefficient, excellent low light response, guarantees module power generation performance.

## Lower power degradation

HJT modules have the first year power degradation of ≤1% and the annual power degradation of ≤0.3%.

# HJT MODULES

## Jeniüs N-HJT Bifacial modules

- ♦ Non-destructive smooth cutting surfaces with no heat affected areas and low impact on cell efficiency ;
- ♦ Dual-glass design with front/back loads up to 5400/2400 Pa ;
- ♦ Low water permeability packaging, high reliability and lower full life cycle degradation rates ;
- ♦ The extreme increase in efficiency thanks to the application of trans-light technology .

Curved surface packaging technology



Flexible packaging technology



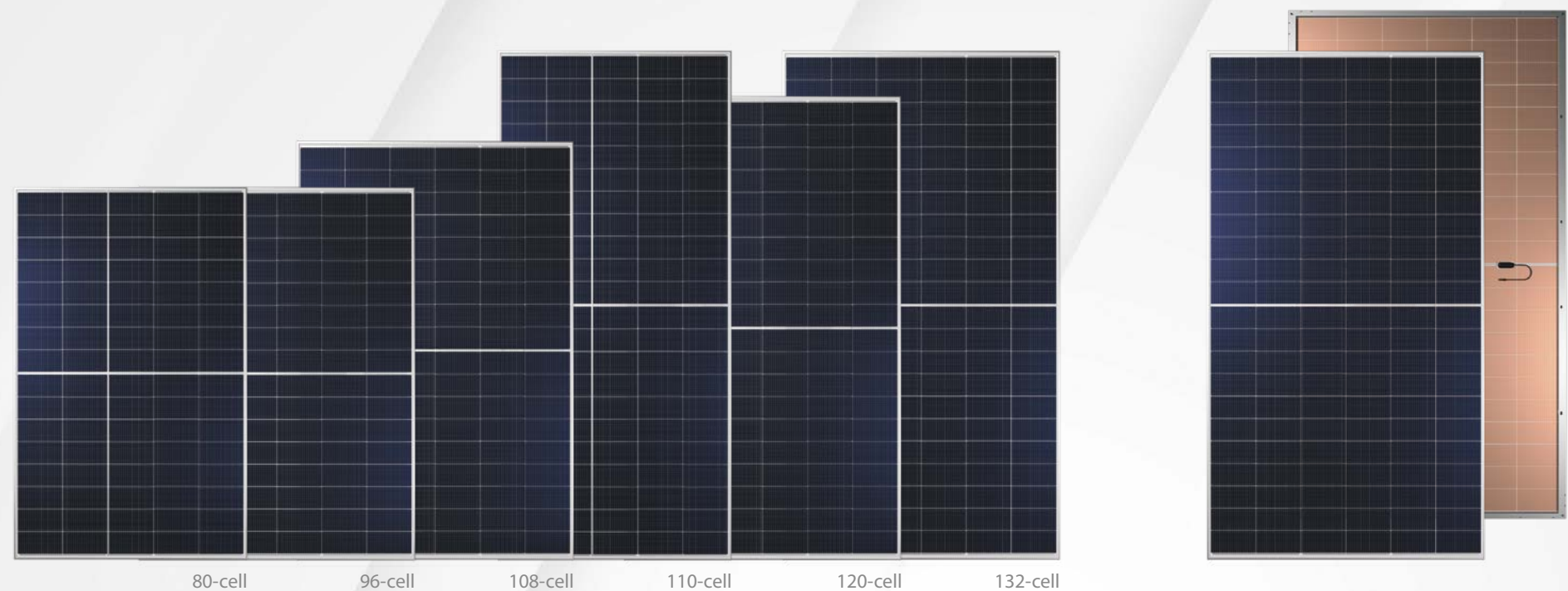
High reliability packaging technology



Highly accurate and reliable SMBB stringing technology



Low loss cell cutting technology / half cell technology



440<sub>W</sub>

525<sub>W</sub>

590<sub>W</sub>

605<sub>W</sub>

660<sub>W</sub>

730<sub>W</sub>

	80-cell	96-cell	108-cell	110-cell	120-cell	132-cell
<b>Number of cells</b>	80 [ 2 x (8 x 5) ]	96 [ 2 x (8 x 6) ]	108 [ 2 x 9x 6) ]	110 [ 2 x (11 x 5) ]	120 [ 2 x (10 x 6) ]	132 [ 2 x (11 x 6) ]
<b>Max-efficiency</b>	22.9 %	23.0 %	23.1 %	23.2 %	23.3 %	23.5 %
<b>Dimension</b>	1750×1096×30 mm	1750×1303×35/33 mm	1961×1303×35/33 mm	2384×1096×35/33 mm	2172×1303×35/33 mm	2384×1303×35/33 mm
<b>Weight</b>	23 kg	27.4 kg	30.7 kg	32.6 kg	35.3 kg	36.4 kg
<b>Application</b>	Residential & Commercial	Residential & Commercial	Residential & Commercial	Residential & Commercial	Utility	Utility

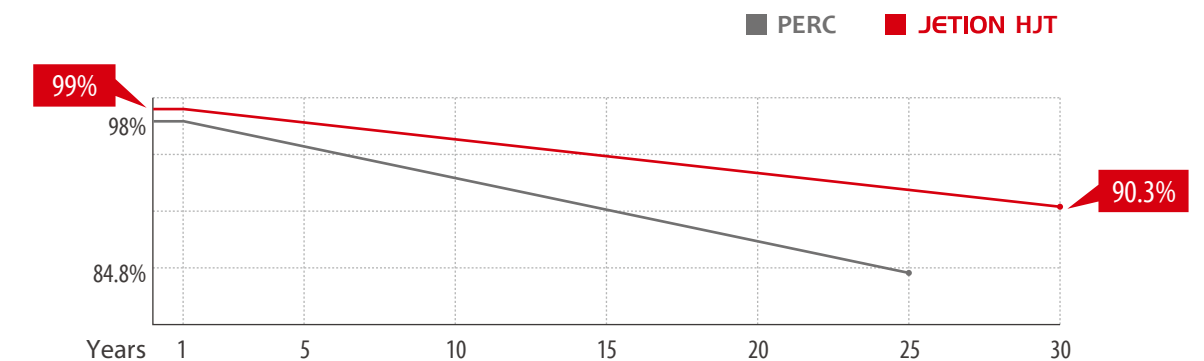


# QUALITY FIRST

## LEADING PRODUCT WARRANTIES & COMPLETE PRODUCT CERTIFICATION

In order to meet our customers' expectations of high quality, we constantly invest in state-of-the-art equipment and the most professional training of our staff. We have absolute confidence in the quality and performance of our products, even under the most extreme circumstances.

Jetion Solar's HJT modules are covered by a 15-year product warranty, with a 30-year output power degradation of <10% and a lower full life-cycle degradation rate to ensure optimal power generation yield.



## CERTIFIED & INSURED





# DISTRIBUTED APPLICATIONS

## 1000KW PV power station (simple model, no discount&loan)

Local peak sunshine hours are 1500h and the system efficiency is 85%, at a tariff of RMB 0.8/kWh (All self-use, or pro-rata conversion).

HJT modules are 0.1 RMB/W more expensive than P-type modules and 0.05 RMB/W more expensive than TOPCon, while HJT and TOPCon modules are 0.02 RMB/W cheaper when flat installed on colour steel tiles and 0.04 RMB/W cheaper when installed off the ground with a tilt angle.

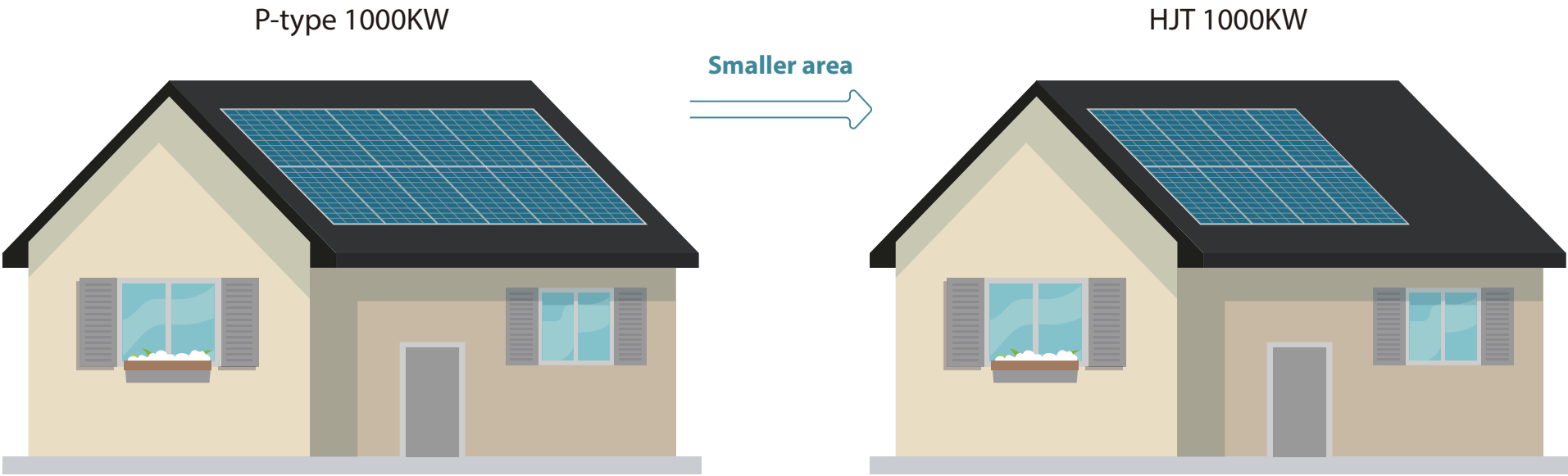
### Flat roofing installation (poor heat dissipation, high working temperature)

	P-type	TOPCon	HJT
Investment per watt (yuan/W)	3.5	3.53	3.58
Total installed capacity (KW)	1000	1000	1000
Total investment (RMB thousand)	3500	3530	3580
First year power generation increased	standard	2%	4%
First year total power generation (kWh)	1275000	1300500	1326000
Payback period (years)	3.49	3.42	3.41
Total revenue (RMB thousand)	24645	25817	26343

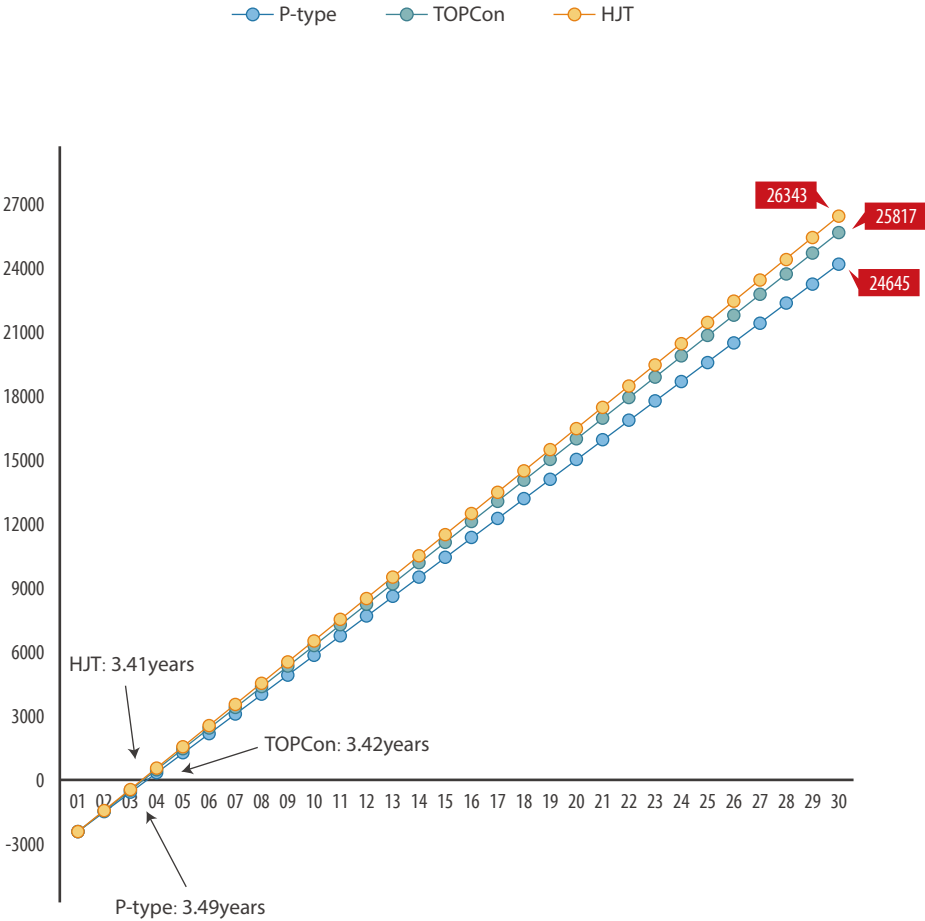
### With inclination off-ground installation (bifacial power generation)

	P-type	TOPCon	HJT
Investment per watt (yuan/W)	3.8	3.81	3.86
Total installed capacity (KW)	1000	1000	1000
Total investment (RMB thousand)	3800	3810	3860
First year power generation increased	standard	4%	6%
First year total power generation (kWh)	1428000	1485120	1513680
Payback period (years)	3.38	3.25	3.23
Total revenue (RMB thousand)	27722	29531	30122

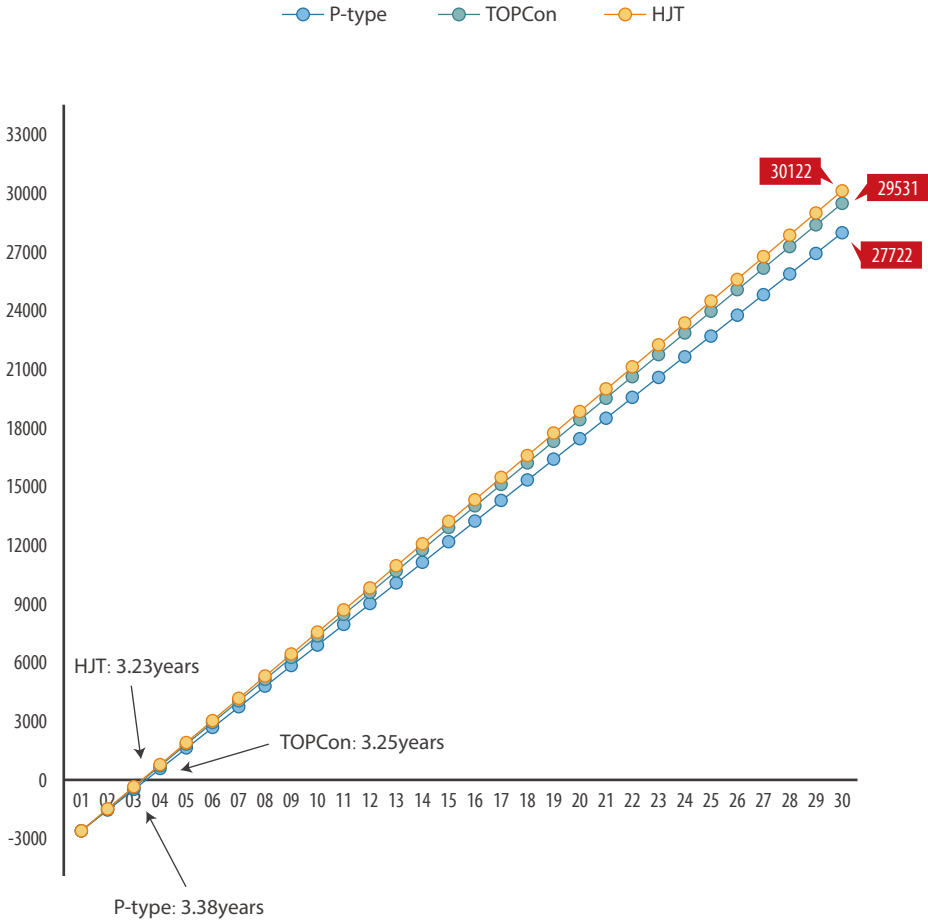
HJT has a small footprint for the same installed capacity, with a fast payback period and high returns



Comparison of 30-years cumulative benefits of flat roofing installation



Comparison of 30-year cumulative returns with inclination off-ground installation



**Fixed area rooftop** (simple model, no discount&loan)

Local peak sunshine hours are 1500h and the system efficiency is 85%, at a tariff of RMB 0.8/kWh (All self-use, or pro-rata conversion).

HJT modules are 0.1 RMB/W more expensive than P-type modules and 0.05 RMB/W more expensive than TOPCon, while HJT and TOPCon modules are 0.02 RMB/W cheaper when flat installed on colour steel tiles and 0.04 RMB/W cheaper when installed off the ground with a tilt angle.

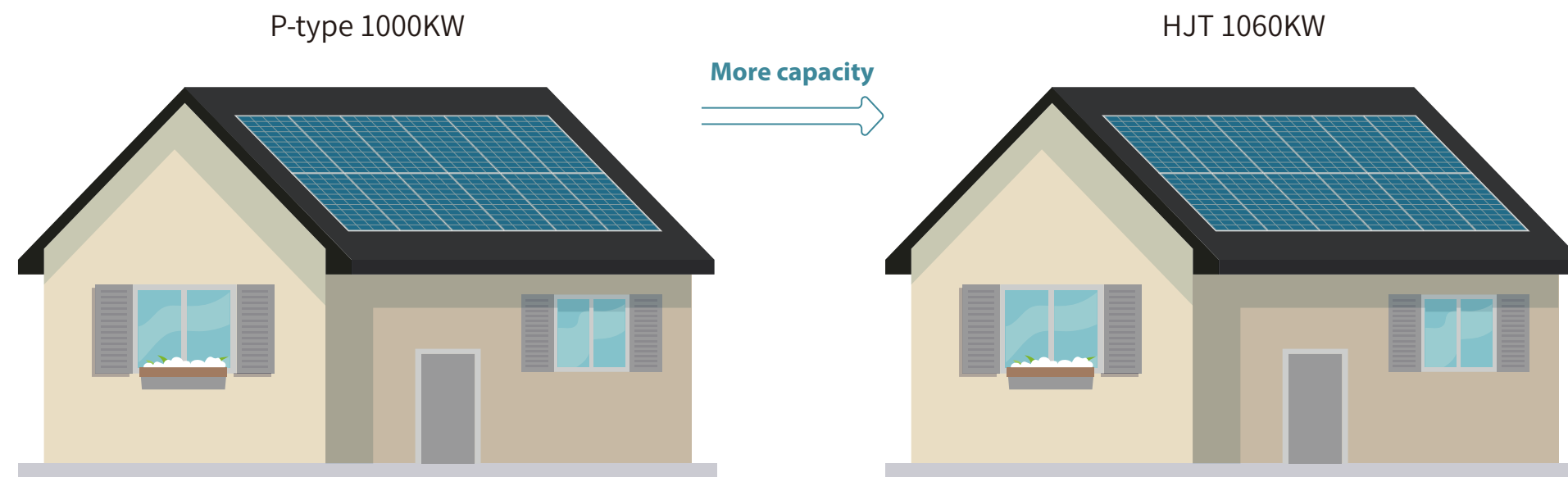
**Flat roofing installation (poor heat dissipation, high working temperature)**

	P-type	TOPCon	HJT
Investment per watt (yuan/W)	3.5	3.53	3.58
Total installed capacity (KW)	1000	1060	1060
Total investment (RMB thousand)	3500	3742	3795
First year power generation increased	standard	2%	4%
First year total power generation (kWh)	1275000	1378530	1405560
Payback period (years)	3.49	3.42	3.41
Total revenue (RMB thousand)	24645	27366	27923

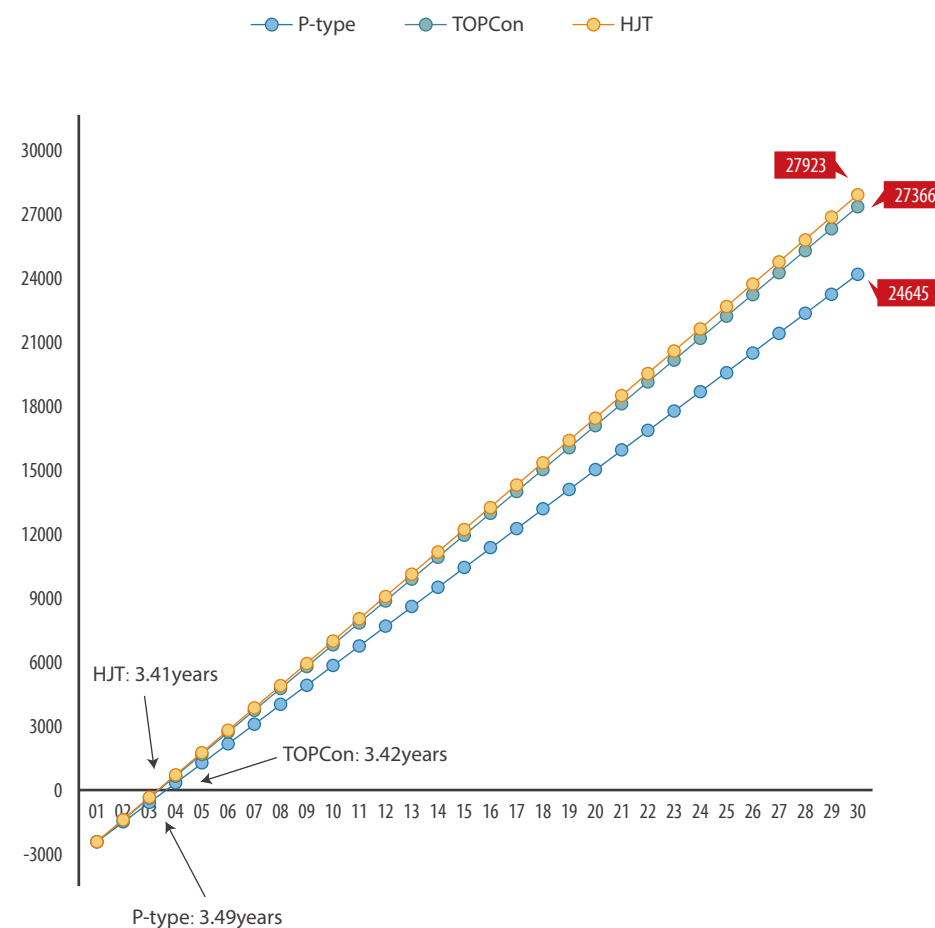
**With inclination off-ground installation (bifacial power generation)**

	P-type	TOPCon	HJT
Investment per watt (yuan/W)	3.8	3.81	3.86
Total installed capacity (KW)	1000	1060	1060
Total investment (RMB thousand)	3800	4039	4092
First year power generation increased	standard	4%	6%
First year total power generation (kWh)	1428000	1574227	1604500
Payback period (years)	3.38	3.25	3.23
Total revenue (RMB thousand)	27722	31303	31929

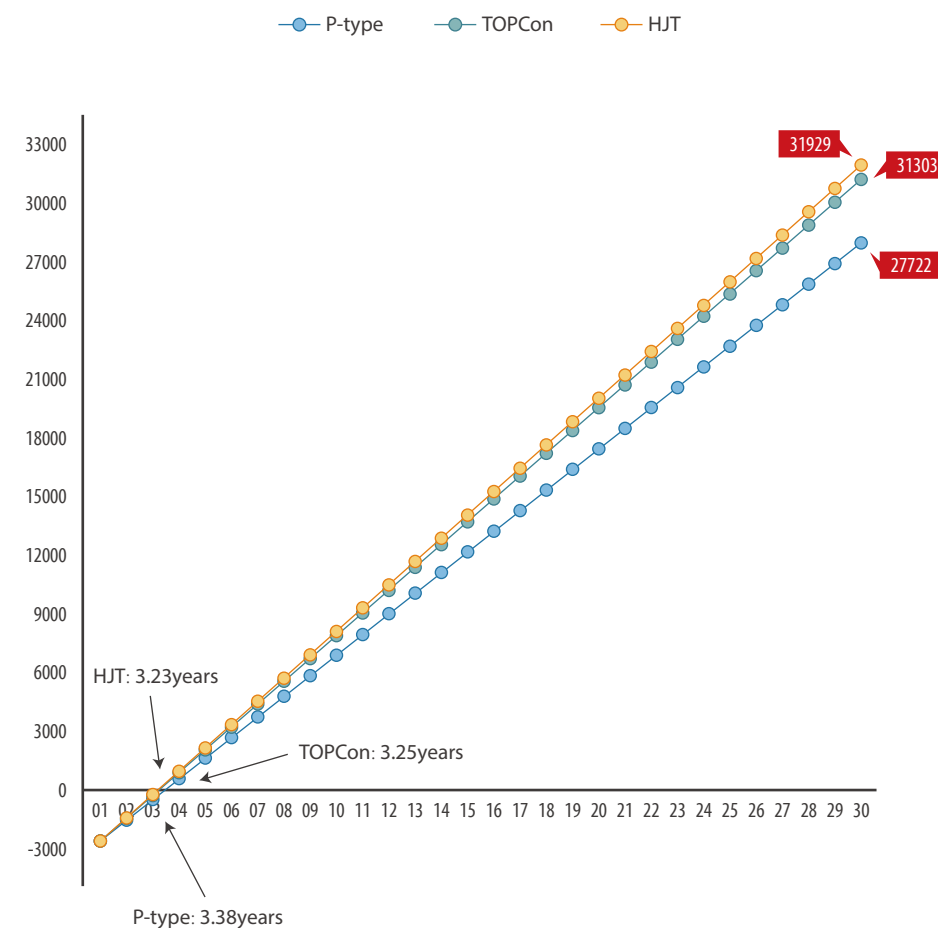
HJT has more installed capacity for the same area, faster payback period and higher returns



Comparison of 30-years cumulative benefits of flat roofing installation



Comparison of 30-year cumulative returns with inclination off-ground installation





# PRACTICE TESTS THE TRUTH

📍 Jiangyin, Jiangsu (31°53' N, 120°10' E)

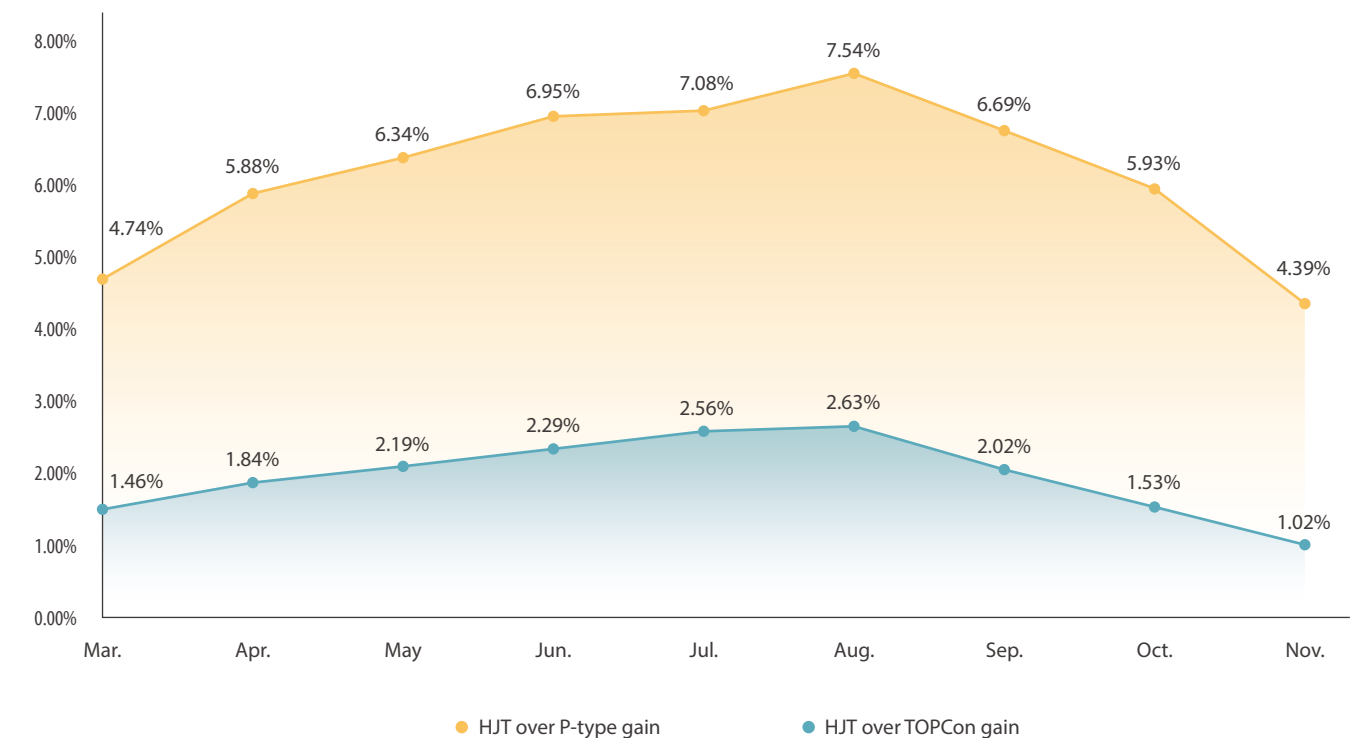
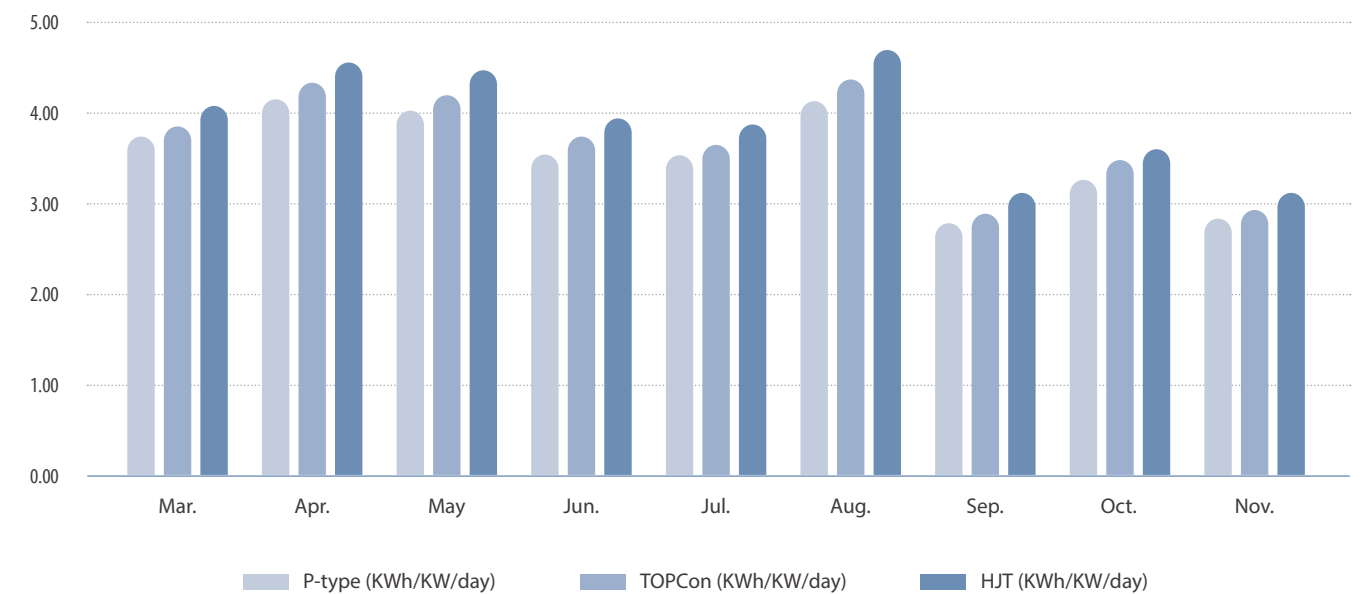
📐 Optimum inclination 23° installation

📅 Mar. - Nov.



	P-type power generation (kWh/kW/day)	TOPCon power generation (kWh/kW/day)	HJT power generation (kWh/kW/day)	HJT over P-type gain	HJT over TOPCon gain
Mar.	3.75	3.90	4.09	4.74%	1.46%
Apr.	4.17	4.34	4.57	5.88%	1.84%
May	4.02	4.20	4.44	6.34%	2.19%
Jun.	3.54	3.74	3.96	6.95%	2.29%
Jul.	3.53	3.70	3.93	7.08%	2.56%
Aug.	4.16	4.37	4.65	7.54%	2.63%
Sep.	2.79	2.93	3.09	6.69%	2.02%
Oct.	3.32	3.47	3.64	5.93%	1.53%
Nov.	2.85	2.96	3.09	4.39%	1.02%

09 Outdoor evidence

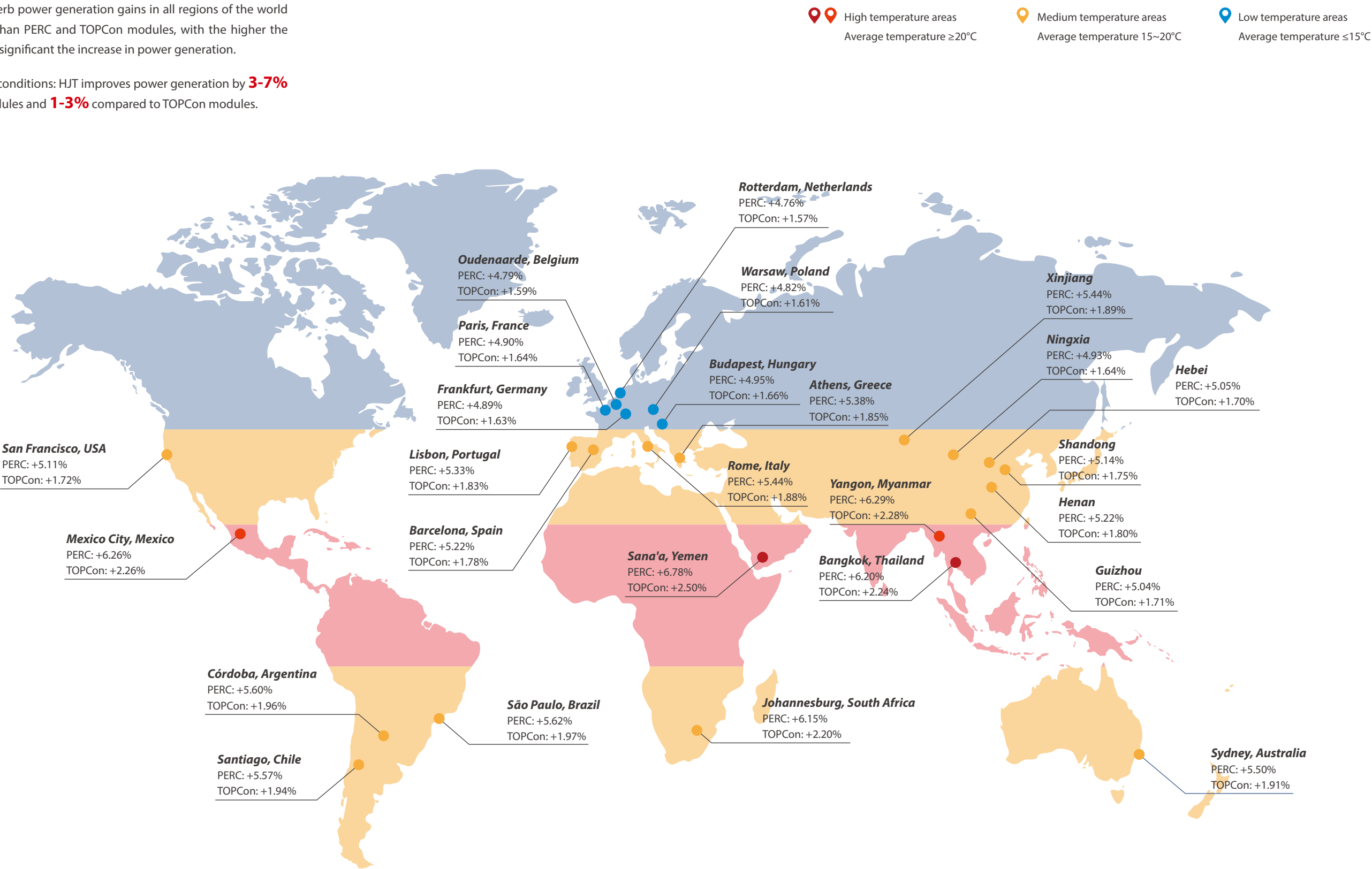


The empirical data shows that HJT generated **6%** more electricity than P-type and **2%** more electricity than TOPCon.

# DATA SPEAKS FOR ITSELF

HJT modules have superb power generation gains in all regions of the world and are much higher than PERC and TOPCon modules, with the higher the temperature, the more significant the increase in power generation.

Under comprehensive conditions: HJT improves power generation by **3-7%** compared to PERC modules and **1-3%** compared to TOPCon modules.

Low temperature areas  
Average temperature  $\leq 15^{\circ}\text{C}$